



WE Expressions



APS Affiliate #230

Women Exhibitors

Supported by AAPE

Journey of Artist to Grand Winner - Betsey Carter

Q4 2014

Volume 8, Issue 4

My journey into philately began when Nicholas, my husband, was running for APS president. He was an avid stamp collector, a lover of "sticky rectangles" especially those from West Africa. I, on the other hand am an artist, a lover of all sorts of pencils and paints. He did his thing; I did mine. At stamp shows he would shop for stamps and I would find fabulous friends and shop museums and stores. For me, friends were and are the very best part of the hobby.

We went to many, many stamp shows as Nicholas campaigned. Needing something to do besides shop, I began to look at things at the shows. I saw the exhibit "Christmas Dinner at the Portland Hotel" by Liz Hisey and was intrigued by her story told with something other than those sticky rectangles. Barbara Harrison's "Grandmother's House" story was another inspiration. The Display class of exhibiting seemed to me an interesting alternative to the rates, routes, and marks of "serious"

philately in which I have little interest. I began looking thru boxes of advertising covers at stamp shows and found a cover advertising art supplies. That was it, the beginning of my downward slide into philately. I had "crossed over to the dark side" as a good friend and wife of a philatelist told me. Gertrude was born; an artist I invented to tell the story of how oil painting is done.

Gertrude's first outing was at AmeriStamp Expo 2007. It was a one frame exhibit which received a Silver-Bronze Award. Of course disappointed that my exhibit, with an original oil painting (shown on page 6) did not receive a gold medal, I followed the advice of the judge, Phil Stager and worked on making the exhibit longer. At the time, I had zero ideas of what philatelic exhibiting was really about. Exhibiting art yes that I knew but stamps not a clue.

Using the next few years to look for material that would tell a longer, fuller story of Gertrude,

Cont. on page 6

Inside this issue:

| | |
|---------------------------------------|---|
| Journey of an Artist to Exhibitor | 1 |
| Chair Chick-Chat | 1 |
| Online Exhibits - Part 2 | 2 |
| Editor's Remarks | 2 |
| WE Sterling Achievement Award Winners | 3 |
| Album Closed - Eileen Meier | 6 |

Chair Chick-Chat - Liz Hisey

Welcome to cooler temperatures and lovely weather. Eight WE members met in Hartford where we discussed the future of Women Exhibitors. Consensus was that we wanted to keep the association going. To do that we need help. Please call either myself or Kristin and offer to assist. 2016 will see the 5th WE Fest and if it is going to be as successful as the others have been we need help and input from the membership, subject matter for seminars, and a coordinator to handle programming. There are over 100+ members, surely some of you can spare some time to help others like yourself who want to

learn to exhibit. It does not mean that you will be on your own, there is always others to share the burden.

WE has come a long way since our inception. At the meeting in Hartford members shared how they had benefited from the help of mentors in WE. As you know one of our newer members, Betsey Carter won the Grand at AmeriStamp Expo 2014, and she has only been exhibiting for 3 years. When members visit dealers, there is a lot more respect than before and a new willingness to help. We need to keep going and to encourage others as they begin to exhibit, so please help us and wear your WE pin.

WSP Exhibitions

- October 17-19
SESCAL,
Los Angeles, CA
- November 14-16
Filatelic Fiesta,
San Jose, CA
- November 21-23
CHICAGOPEX,
Itasca, IL
- December 5-7
FLOREX,
Orlando, FL

Online Exhibits - Part 2 - Steven Zwilling, stevenzwilling@gmail.com

In the last issue, I discussed internet sites that make stamp exhibits available online so that exhibitors may see and learn from others' exhibits. In this issue, I will continue to look at sites with a wide focus with many different types of exhibits and some of the more specialized sites available.

Aerogram exhibits are useful for exhibitors who have to deal with large items as well as aerogram collectors themselves may find this web site from Aerogramme.com interesting. www.aerogramme.com/exhibits/Exhibits.html

The APS web site has on-line stamp exhibits on its constantly expanding website. There are, as of this writing, 13 great Foreign Exhibits at stamps.org/Foreign-Exhibits, 11 Topical Exhibits at stamps.org/Topical-Exhibits, two Air Mail Exhibits stamps.org/Air-Mail-Exhibits and 10 US exhibits at stamps.org/United-States-Exhibits including a new one on the U.S. Flag and Transportation Coil Issues of 1981.

Australian Revenues from Dave

Elmore can be seen at www.ozrevenues.com/tabs/t5.html. There are more exhibits of Australian revenues here than you might have thought possible. His site has more Australian revenue material if you are interested in looking at non-exhibits at www.ozrevenues.com.

Canadian exhibits from the **British North America Philatelic Society** can be viewed at bnaps.org/ore/ore-index.htm.

Canadian research articles in the library of the **Royal Philatelic**

Society of Canada can be found at www.rpsc.org/library.htm. Many of these research articles include excellent illustrations and techniques that can be adapted to exhibits. One of my favorite sections, dealing with the Method of Production of the Canadian Admiral Stamps, I copied wholesale and used as descriptive text in one of my exhibits (with appropriate changes to the stamp image being displayed.) The library is at www.rpsc.org/Library/admiral/admiral.htm and

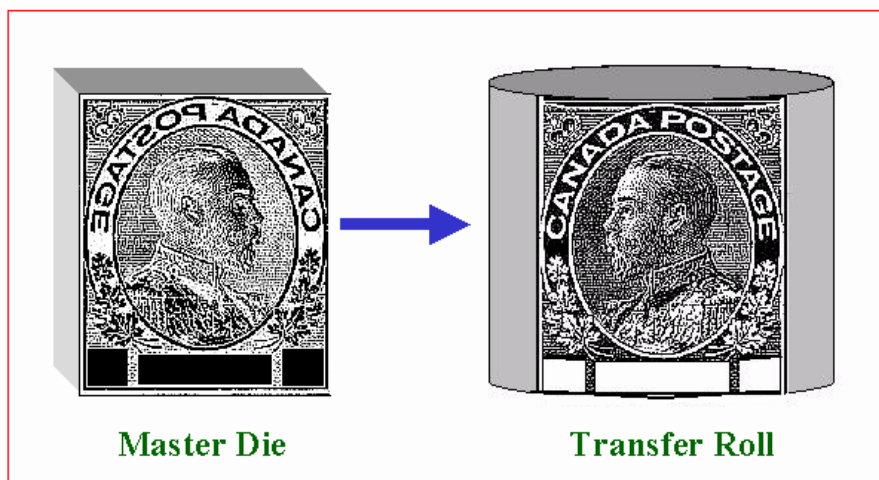


Figure 1: Master die of Canadian Admiral stamp.

Continue on page 3

Editor's Remarks - Kristin Patterson, Kristin_email@yahoo.com

Those who attended the WE meeting at StampShow 2014 in Hartford, CT had the opportunity to meet Steven Zwilling in person. This issue displays Steven's 7th consecutive tips for exhibitors article in *WE Expressions*.

Steven is a regular writer for *The Philatelic Exhibitor (4 years)*, *American Stamp Dealer & Collector*, and *India Post*. WE greatly appreciates his willingness to contribute quarterly. If you ever have comments or suggestions about his articles, you are welcome to send them to him or me.

The purpose of *WE Expressions* is to keep members abreast of

upcoming events, relay tips on exhibiting, and make members more comfortable with exhibiting. I hope that we have succeeded.

As Liz mentioned in her Chick-Chat, WE is always looking for new ideas and new people to join the group. If you know of a female or male that might benefit from being a member, please invite them to join. WE is also looking for people to hold WE meetings in their area to talk with new exhibitors about the joy of exhibiting. Lastly, WE is always in need of help with running Fests or serving on the board. Please consider volunteering.

Women Exhibitors 2013-2014 Board

Liz Hisey.....Chair/Treas.

lizhisey@comcast.net

Pat Stilwell-Walker Vice-Chair

psw789@comcast.net

Vesma GrinfeldsSecretary

vesmag@gmail.com

Anne Harris.....Marketing

gofrogger@gmail.com

Denise Stotts..... Dir-at-Large

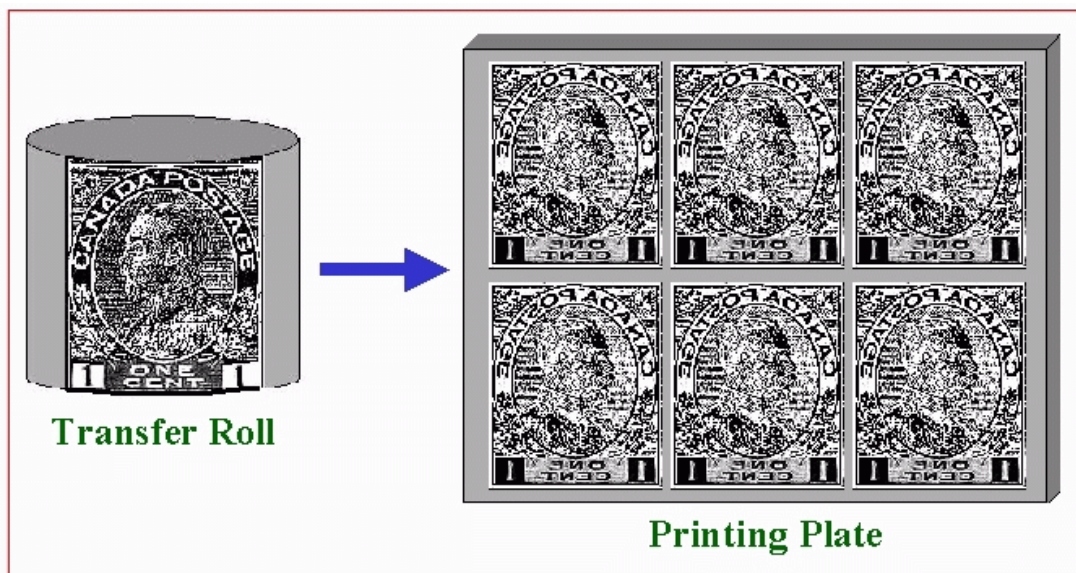
stottsjd@swbell.net

Janet KlugDir-at-Large

tongajan@aol.com

Online Exhibits - cont. from page 2

the illustration technique that I admired so much can be seen at the "Manufacture" tab of the Admiral Stamps of Canada article at the above link. Figures 1-3 are part of a series of illustrations on how a stamp is produced. The complete process is described in seven illustrations.



Continue on page 4

Figure 2: One Transfer Roll was used at a time to make an entire plate.

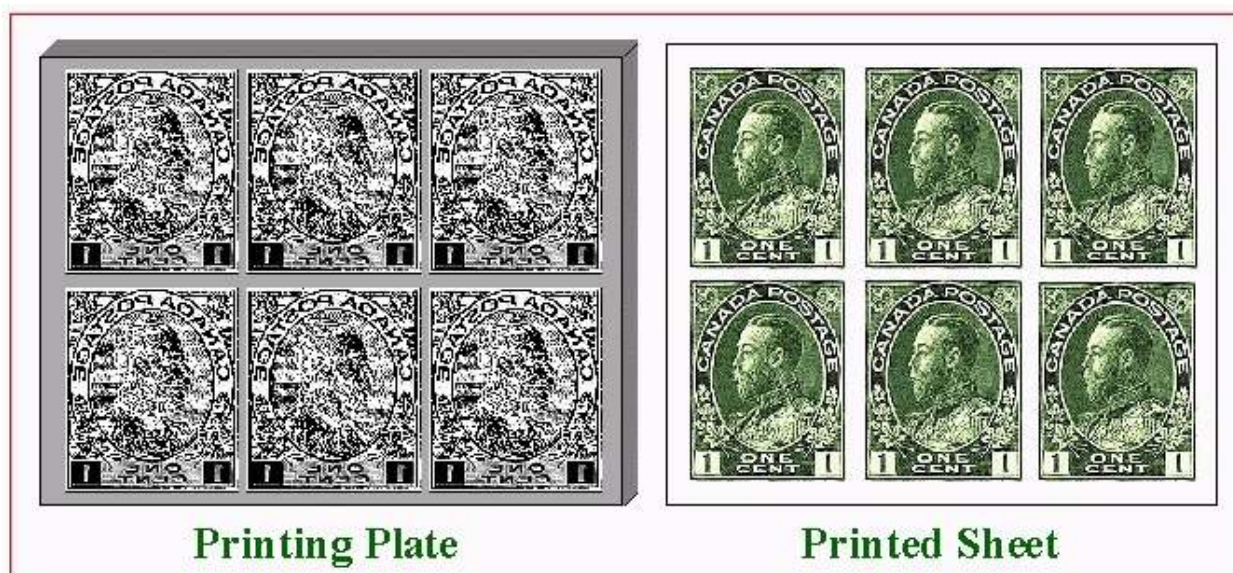


Figure 3: Finally, the plates were inked and used to print the design onto sheets of paper.

WE Sterling Achievement Award Winners

A special congratulations to the following Sterling Achievement Award winners for their fine exhibits at recent stamp shows.

Tonny Van Loij - *Colorado Postal History Kt, Ct 1854-1900*, at Rocky Mountain

Jane King Fohn - *Hillcountry Honkeytonkin Rita: Labrador Retriever* at OKPEX



Sterling Achievement Medal

Janet Erbach - *Coccinellidae - Ladybird Beetles and Their Impact on Men* at NTSS

Vesma Grinfelds - *Handmade Provisional Cancellations of Latvia: 1919-1920* at MSNE

John Owen Sr - *Pan-Pacific Boy Scout Jamboree: A Philatelic & Memorabilia Review* at CHARPEX

Continue on page 6

Online Exhibits ~ cont. from page 3

Special Delivery exhibits from Bob Markovits are on his site at usspecialdelivery.com/index.html.

British Revenues from the **Great Britain Revenue Society** are available at www.revenuesociety.org.uk/invited-displays/invited-display-index.html.

The International Machine Cancel Society makes Meter Exhibits available on their web site at www.machinecancel.org.

Postal stationery exhibits from the **United Postal Stationery Society** are shared by the Society www.upss.org/code/exhibits.php?PHPSSES-SID=79a19a49c836775e942d0b948d9a756e.

China exhibits are not frequently seen. **The China Stamp Society** makes several available. The more specialized the society, the less likely that general collectors and exhibitors have seen its web site material. www.chinastampsociety.org/exhibits. The three sites that follow are from specialized societies and may not be familiar to many exhibitors.

Exhibits with a focus on maritime services from the **Universal Ship Cancellation Society** are available at www.uscs.org/resources/exhibits.

Maximum cards exhibits, from the **Asia Pacific Maximaphily** group, are available at www.apmaxima.com/?cat=29.

The International Philippine Philatelic Society has two exhibits addressing Philippine Revenue Stamps on its site at www.theipps.info/exhibits.htm.

Robert A Siegel Auction Galleries has a website section with exhibits. The exhibits on this site are significant exhibits and many are/were well known. These exhibits include traditional, postal history, and thematic. The description for one of the exhibits

reads:

* The exhibit was first shown at WESTPEX in 2008.

* The exhibit qualified for FIP at SESCOAL in 2008, where with five frames it won a Large Gold (95 points) and won the Grand Prix National. That qualified it for eight frames.

“China exhibits are not frequently seen.”

* It was then shown in London in 2010 where it received a Large Gold (98 points) and won Best in Postal History Class. It was also nominated for the Grand Prix d'Exposition.

There are some good exhibits here www.siegelauctions.com/exhibit.php.

And perhaps the site with the most consistent high quality and well done exhibits, is the exhibit portion of the **Frajola** website at www.rfrajola.com/exhibits.htm with extraordinary exhibits.

A man named **Chip** who shares some of his exhibits (mostly U.S. postal history) on his website presents some unexpected pleasures at cgpostal.com. See figure 4 for a sample title page of one of Chip's exhibits.

A caution: it is easy to go to a site and look over the names or

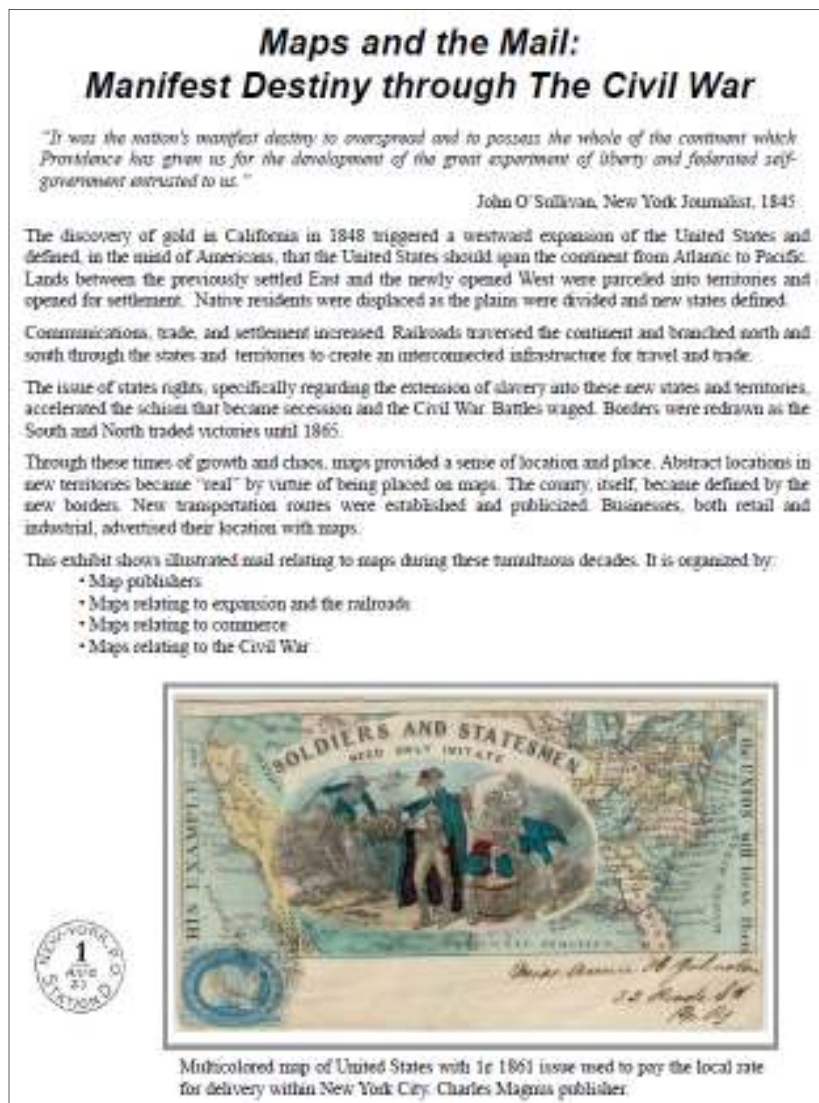


Figure 4: Title page of one of Chip's exhibits.

Continue on page 5

Online Exhibits - cont. from page 4

types of exhibits and scan the pages. It is hard to learn, however, from scanning. Learning takes a bit of work. If an exhibit is a gold medal exhibit, a reviewer can look at it and ask "what makes it a gold level exhibit?" Can we see differences between exhibits or, sometimes, between exhibitors?" If you find an exhibitor whose work you admire look for other exhibits by the same person.

In taking a detailed look at an exhibit you can see things that you might otherwise miss by just scanning or by ignoring those with titles that do not seem to interest you. And yes, I know, the alternative is to spend the next 47 years looking at exhibits and we cannot do that either.

Let me single out a few examples that might be interesting.

On Exponet, there is a one-frame exhibit of *Revenue Stamps of the Indian Princely State of Vala* which can be seen at www.japhila.cz/hof/0236/index0236a.htm. On page 2 (click on the thumbnail) we see how the exhibitor treated unlisted shades and unlisted values. It is short and simple (just say 'unlisted'), but it is a tool to put in our toolbox. And if we were preparing an exhibit and we came across this situation for the first time might not know how to handle this and we might feel stuck.

Look at another Exponet exhibit at www.japhila.cz/hof/0260/index0260a.htm and see the first page. It's bilingual! Some exhibitors prepare bilingual title pages and some exhibitors prepare bilingual exhibits where all text is present in two languages. Another interesting technique that is sometimes used for exhibits in International shows.

At Philatelist Frajola's site, www.rfrajola.com/exhibits.htm, along with articles there are

almost 100 exhibits listed that were produced by many philatelists. In the exhibit Mobile, Alabama CSA Provisional Issue, at the Frajola web site, look at page 2 (figure 5) as an example of how margin imprints can be treated.

If you work with an exhibiting friend, the two of you can each look at some of these exhibits and find five interesting techniques or treatments to share with the other. There is a wealth of exhibiting information in these sites.

In the next column, I will discuss some web sites that are

invaluable to exhibitors even though they do not include exhibits. These sites have information that make exhibits better and easier to prepare.

Note to readers: Although it may be slightly disconcerting to see the actual URL spelled out for each site, not every subscriber of this newsletter receives the on-line edition. If the URL were hidden in the linked text those seeing the printed text would not have easy access to finding the web sites. Please excuse any inconvenience this may have caused.

Intended use and accepted for prepayment outside of Mobile

Nearby New Orleans was the first city to issue adhesive provisional stamps. After complaints from postmasters in the surrounding area where the stamps were not valid for use, New Orleans added the phrase "Usable Exclusively in the New Orleans Post Office" as an imprint in the margin.



Usable Exclusively in the New Orleans Post Office

Usable Exclusively at the Mobile Post Office

Tapling Collection, scan of photograph at 75%

A top sheet margin pair from the Tapling Collection in the British Library in London (illustration above) shows a similar imprint above Mobile 5¢ provisional stamps. It reads in part: "[exclus]ively at the Mobile Post Office." Only one other top imprint copy is known from Mobile (shown later). Due to their scarcity, it is possible the top imprint was also added to the Mobile pane after the initial printing.

Since Mobile provisional stamps were only valid for use at Mobile, almost all copies are cancelled with the black double circle Mobile postmark, which had been in use since late 1859 and always included a year slug.



Only two stamps were postmarked and accepted for prepayment outside of Mobile

Postmarked Claiborne, Alabama, January, 1862 5c rate to Shelby Springs

Claiborne is about 90 miles north of Mobile at mile marker 146 on the Alabama River. The other non-Mobile use was postmarked in Montgomery, Alabama, a little further up the Alabama River.

Figure 5: Page from Van Koppersmith's exhibit Mobile, Alabama CSA Provisional Issue at the Frajola site showing marginal markings.

Journey of Artist to Grand Award Winner - cont. from page 1

my exhibit grew from 16 single pages to 40 double pages. Gertrude became like a member of the family. A painting friend was surprised to discover she was a fictional person not an ancestor. Her story began to expand and was always on my computer. I searched Ebay and stamp shows for items that would improve and enhance my story. Even some dealers began to know Gertrude. Asking for advice from my philatelic friends, I was never disappointed. Help was readily given. Janet Klug became Gertrude's cheerleader after all she was from Janet's hometown of Cincinnati.

In 2012 five frames telling Gertrude's story "The Journey of a Woman Artist" were exhibited at NAPEX receiving a Vermeil Award and the Philatelic Exhibiting Creativity Award. Still no gold medal, but

I was delighted. Again the judge, Pat Walker meeting me at the frames gave very helpful and useful ideas on how to create an even better exhibit. Pat suggested chapter and sub-titles headings would clarify my story. Returning to my daughter, a graphic designer, we made the necessary changes and additions.

At Sarasota in February 2013, Gertrude received a Vermeil, the Philatelic Exhibiting Creativity Award, and the AAPE Presentation Award. Once again it



Original painting displayed in the exhibit.

was a very helpful judge, Liz Hisey, who suggested Gertrude needed philatelic information. Who knew that the judges needed to be told that a freak stamp was in fact a freak. To me it was pretty obvious. With much research, each item in my exhibit was given an informative caption. I began to recognize some machine cancels; a very scary thought!

The happy ending of this saga is that Gertrude finally received her gold medal at 2014 ASE in Little Rock, AR. Not only did she get her gold medal, she received the Smithsonian Postal Museum Award, Best Display Exhibit and Grand Award of the Show. Talk about delighted and shocked. What a wonderful experience possible only because of wonderful people to help and encourage a true philatelic beginner on her journey.

Liz Hisey, WE Treasurer
7203 St. Johns Way
University Park, FL 34201

Statement of Purpose: *To provide a vehicle through which women exhibitors can encourage each other through sharing information, ideas, experience, advice, problems, and solutions.*

WE is on the web at www.aape.org/weweb.asp or WomenExhibitors@gmail.com

Album Closed - Eileen Meier

Eileen Lilian Andrews Meier, 73, died peacefully on Thursday, June 5, 2014, in Clifton Forge, VA, after a long illness. She joined WE in 2008 as #99 and was an internationally recognized stamp exhibitor,

twice winning the Grand Award of the American Topical Association, and was a life member of the American Philatelic Society.

She was a Charlottesville and Lake Monticello resident

from 1984-2005. Eileen will be reunited with her husband in the memorial garden of the Thomas Jefferson Memorial Church in Charlottesville, VA. Eileen was a lifelong learner and cat lover.

WE Sterling Achievement Award Winners - cont. from page 3

Dorothy Kugel - The Struggle for Women's Rights at APS StampShow 2014.

If your show has competitive exhibits and is interested in awarding the WE Sterling Award please contact Denise

Stotts at PO Box 690042, Houston, TX 77269-0042 or email her at stottsjd@swbell.net.