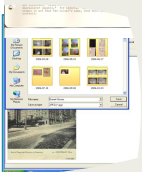


▶ REFLECTING ON EXHIBITING ..... 1



▶ OPTIMIZING GOOGLE SEARCHES, PT. 2 ..... 3



▶ WE FEST II.....4

# WE think

## ADDRESSING THE NEEDS OF WOMEN EXHIBITORS

*What is it like to come back to philately — and exhibiting — after 30 years of inactivity? Kathryn Johnson shares her story and observations.*

# Reflecting on exhibiting

By Kathryn Johnson

Thirty years ago stamp collecting was everything to me. My passion for this hobby bubbled over, and I was involved in every way I could be from my desk, in my home in central Pennsylvania. Stamp collecting was something done through the mail to me – approvals, pen pals, getting *Linn's* and the *American Philatelist*. Exhibiting, too, was sending my stamp exhibit off to shows in cities I'd never been to. Stamp collecting connected me to a larger world that I intended to go see and be a part of, but first I had to be old enough to drive.

Now as I find myself once again passionate about stamp collecting, and I find it a hobby much more in reach. I can exhibit, bringing my exhibit to a show, I can buy stamps on line and read about the hobby on line, too. Getting stamps is much faster and satisfying in a way, instant gratification has its place in a shopper's heart. Stamp collectors, too, are friends I can meet, not just ones known in a detached way through the mail.

Exhibiting thirty years ago I was sure my exhibit was perfect and would win high awards. I knew how exciting the exhibit was to me, it was bound to be that exciting to others! My stamps were rare finds, not something I searched and pull up by the dozens on eBay. I didn't exhibit for awards, but to show my very cool stamps. Today I likely have a few more cool stamps, but I know really excellent material is out there. Material that I don't have, and should have in my exhibit. Today I see what I don't have, before I was excited by what I did have.

Is exhibiting easier now? Surely it is, there are 119 pages of rules, a virtual

“how to” for the price of toner and paper, available when I hit print. Lots of stamp shows have exhibits, and exhibits are available on line to view. Exhibiting is easier if you find you are someone who knows how to and likes to follow the rules. I'm not so sure I fit that cate-



*Sherman and Mr. Peabody's Wayback Machine (The Rocky & Bullwinkle Show) takes us way back to the 1970s when an enthusiastic young collector was exhibiting Victorian Ceylon.*

# REVENUES

Foreign Bill Issues



A Foreign Bill is a written order by a creditor (the drawer) to a debtor (drawee) to pay a certain sum to a third person when one of the three persons is in a foreign country. A bill of this kind is negotiable anywhere, but when negotiated it becomes subject to that country's laws where negotiated, and has to bear its stamps. Therefore, all foreign bills with Ceylon stamps must be either payable in the colony or outside the colony, thus imports and exports. The stamps dealt with here are inscribed, "drawn out of, but negotiated in, the colony, wheresoever payable," for imports. Curiously enough, these stamps do not bear the island's name, they hold only the Queen's portrait.

*Kathy's Ceylon exhibit has been waiting patiently for her to come back to it. WE're so glad she did!*

gory, and I kind of miss that feeling that my exhibit was going to be unique and a first opportunity for the viewers and judges to see just how interesting my corner of the stamp collecting world was. Without the clear rules, we exhibitors charted our own paths instead of following a prescribed path. Today we can have mentors, materials from eBay, even on-line classes to help us exhibit, and we can know how to do it right.

Why exhibit now? Today it is for a larger objective – it is to be a part of keeping this hobby vibrant, a hobby so many of us hold

dear. I won't exhibit for myself, or an award I could get, but for the sake of exhibiting being a big part of the educational backdrop of our hobby. In this process I become a student of the stamps I studied thirty years ago. I remember what gave me a thrill then. It gives me a thrill, too, today. It is sometimes reflective of our hobby's dimming light – the research articles were written years ago, and there is little newly written to find. Still, I work on, reconnecting to my old hobby of collecting and exhibiting, finding a little of myself in those cancelled little squares I hold so close.

## WE Board of Directors

Ruth Caswell, Chair  
[ruthandlyman@earthlink.net](mailto:ruthandlyman@earthlink.net)

Vesma Grinfelds, Secretary  
[dzvesma@sprintmail.com](mailto:dzvesma@sprintmail.com)

Liz Hisey, Treasurer  
[lizhisey@comcast.net](mailto:lizhisey@comcast.net)

Patricia Stilwell-Walker, At Large  
[psw123@comcast.net](mailto:psw123@comcast.net)

Denise Stotts, At Large  
[stottsjd@swbell.net](mailto:stottsjd@swbell.net)

Barb Harrison, Newsletter Editor  
[barbandwill@comcast.net](mailto:barbandwill@comcast.net)

Janet Klug, Editor of WE Think  
[tongajan@aol.com](mailto:tongajan@aol.com)



APS Affiliate #260

Supported by  
AAPE

**No material in this publication may be reprinted in any form unless permission is acquired in advance.**

Contact the  
**Editor, Janet Klug**  
[Tongajan@aol.com](mailto:Tongajan@aol.com)

This is a publication of WE  
— **Women Exhibitors** —  
Whose mission is to be the vehicle through which women exhibitors can encourage each other through sharing information, ideas, experience, advice, problems, and solutions.

For more information contact  
Ruth Caswell (Chair) :  
[ruthandlyman@earthlink.net](mailto:ruthandlyman@earthlink.net)

*"Our battered suitcases were piled on the sidewalk again; we had longer ways to go. But no matter, the road is life."*

## How to...

# Optimize Google Searches

## Part 2

By Janet Klug

From PowerPoint presentation given at the Festival for Philatelic

short period of time you can have a very nice reference file. However, there are some caveats.

Using the images for publication, or in an exhibit, or for any other purpose other than your own personal use, may violate copyright laws. Check the website to see if there is a Terms of Use or a copyright. If you are in doubt, send an e-mail to the

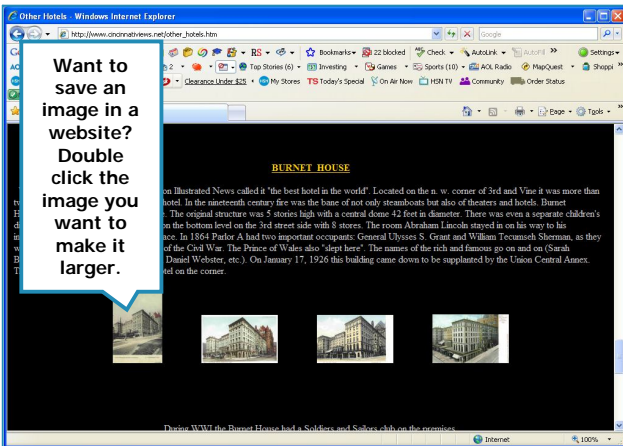


Figure 1. An image of Burnet House would be a good addition to the reference material being collected for an exhibit.

Part 1 of this article appeared in the previous issue of *WE Think* and contained information about how to find information more quickly using Google's search for images. This continuation explains how to save the images you have found.

Using Google's search for images will frequently lead you to one or more images that would be useful for your research. Most of the time you can save the images you found to your computer.

Select the image you want to save and double click it to make it as large as it will go. This will enlarge the image to its maximum capacity.

A new screen will appear with the image enlarged. Move your cursor over the image and click the right

mouse button. A drop-down menu appears. Click "Save picture as..." A box pops up. This will usually be your default image file ("My Pictures" on a PC, or whatever file you wish to save the picture). Select the file in which you want the image to be

stored. In the box at the bottom of the pop-up menu key in the name you wish to give the image and select the file type. JPEG is a good choice if you are unsure. Click "Save."

Saving a picture you have found on the Internet is not complicated and within a

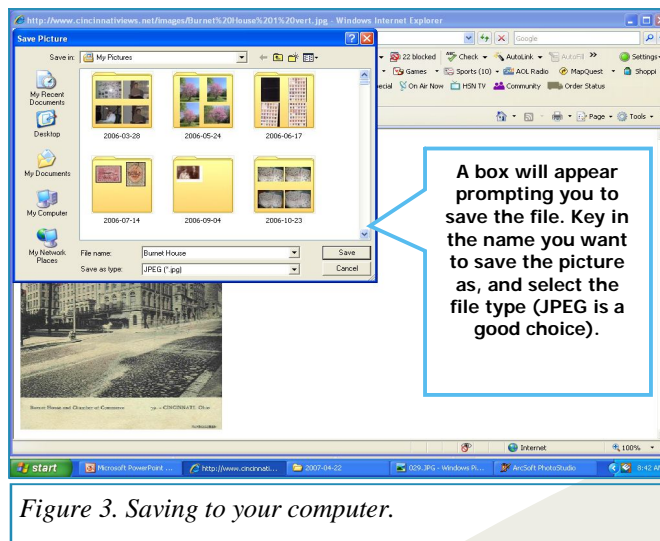


Figure 3. Saving to your computer.

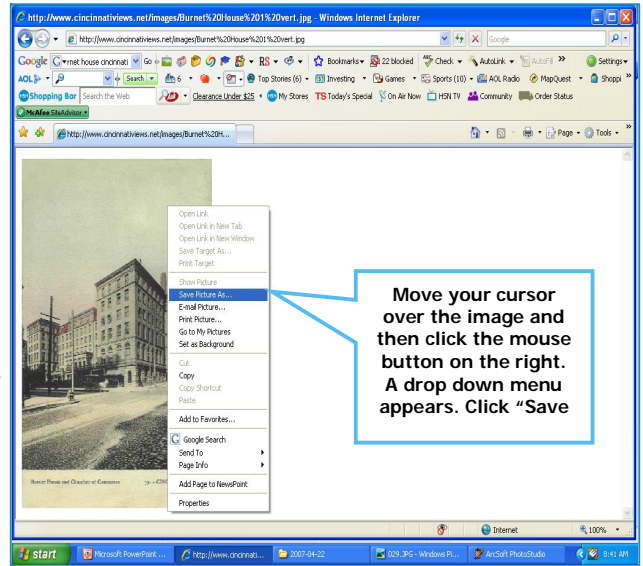


Figure 2. Saving the picture.

webmaster of the website from which you want an image and request permission for its use.

Sometimes this contact will have unintended consequences. For example, I have made contact regarding images from museums and historical societies that have not only allowed me to use their images, but have sent me the images I wanted in much higher resolution. You never know what will happen until you give it a try.

Next issue: Part 3 - Using Google to search for historical people.

"Do not wait for leaders. Do it alone, person to person."

Coming in May...

## WE Fest II - Denver, May 12-16

By Liz Hisey & Pat Walker

### Calling all WE members!

Dates: May 12<sup>th</sup> through 16<sup>th</sup> 2010 – being held in conjunction with and to take advantage of Rocky Mountain Stamp Show. Independently of WE Fest II Members of WE have already committed to bring 120 frames of exhibits to this great WSP show! So please look at your exhibits and see what you can send/bring to RMSS. WE Fest II will also be held in conjunction with the show. If you have exhibits please let me know as soon as possible so that I get keep the RMSS Committee informed. More information on the WE Fest will be coming in the next couple of months.

We will also be taking part in a "throw down" competition between WE, Bittersweets based in CT, Midnight Mavericks based in TX and also I think Betty's Boys from St. Louis. Scoring will be done by number of awards and medals won by each team. So we need all kinds of exhibits, please do not feel that your exhibit is not up to standard, we want to put on a good showing for WE. All classes of exhibits are acceptable. Also our male members are welcome to exhibit if you are not already committed to one of the other teams.

Lets whomp the other teams!!!!

### Where:

Crowne Plaza, Denver International Airport, 15500 E 40th Ave, Denver, Colorado 80239.

### Other events

#### Basic Schedule:

Wed May 12 – evening "Get Acquainted" Pizza Party  
Thursday May 13 – full day of seminars  
Friday May 14<sup>th</sup> – one morning seminar, then "sessions" at stamp show  
Saturday May 14<sup>th</sup> – one morning seminar, then "sessions" at stamp show  
Sunday – farewell Brunch...  
Also – elective seminars of general interest will be offered to all attendees at the stamp show.

WE Fest II will have three "tracks" that attendees may select:

Beginning Collecting/  
Exhibiting  
Non Traditional Exhibiting  
Intermediate/Advanced Exhibiting

Because WE Fest II is being held just before and during an actual stamp show, the sessions are being designed to take full advantage of what this offers. Some examples of sessions which will have a "hands on" component using the actual exhibits/bourse are "Shopping with Dealers" for new collectors and "Understanding the various types of exhibits" for new exhibitors. More ex-

perienced exhibitors will have to opportunity to understand the mechanics and process of judging. New exhibitors will be encouraged to bring their own material to work with during the sessions.

**Mark your calendars!  
Make your reservations!**

This is your journal  
Please share your  
Thoughts,  
Tips,  
Opinions,  
Suggestions,  
Gripes,  
Praises  
Joys,  
Frustrations,  
New ideas,  
Problems,  
Solutions to problems,  
Celebrations,  
Disappointments  
Questions,  
Answers

Send an article to

Editor Janet Klug

tongajan@aol.com

6854 Newtonsville Road  
Pleasant Plain, OH  
45162

Please???  
Pretty Please???

"The most essential factor is persistence —  
the determination never to allow your energy or enthusiasm to be dampened by the discouragement that must inevitably come."

JAMES WHITCOMB RILEY

# Rocky Mountain Stamp Show 2010 — EXHIBITOR'S PROSPECTUS

rompex2010@comcast.net

presented by

## ROCKY MOUNTAIN PHILATELIC EXHIBITIONS (ROMPEX), INC.

An American Philatelic Society World Series of Philately Stamp Show

May 14-16, 2010 www.rockymountainstampshow.com Denver, Colorado

### EXHIBITION PROSPECTUS

#### 1. ELIGIBILITY

Any exhibitor is eligible to enter up to **four** exhibits, two multi-frame of not more than 10 frames each and two

one-frame exhibits, by conforming to these rules and regulations. All exhibits must be entered separately on official entry forms or copies thereof. Exhibits will be accepted at the discretion of the committee.

All material must be the property of the exhibitor or of members of an immediate family living in the same household.

Exhibitor's names shall not appear on the faces of pages, though it is recommended that the name be included on the reverse of all pages.

Counterfeits, forgeries, etc., must be plainly identified as such or the exhibit may be disqualified.

Exhibits that have won any of the following are ineligible for competitive awards at Rocky Mountain Stamp Show 2010: Grand Award at a WSP show (*during the current exhibition cycle*); STaMpsHOW Champion of Champions Winner; FIP Grand Prix Winner (*National, International, or Classes of Honor*); Three FIP Large Gold Medals.

Exhibitors are eligible for competition as a Novice if they have never won a medal (*Bronze or higher*) at an APS WSP exhibition.

#### 2. EXHIBITS

**Frames** - Frames hold 16 pages each based on a 9" x 12" page size. Larger pages will be accepted upon written request to the Exhibits Chairman. Each page must be consecutively numbered on the back or front and must be inserted within a clear protective page sleeve.

**Entry Fees** - One-frame and two-frame exhibits are \$25.00 per exhibit. All other exhibits are \$10.00 per frame. Junior exhibitors (age 15 and younger at the time of the show) may exhibit free of charge provided the exhibit is a reasonable number of pages in length. Failure to exhibit after notification of the exhibit's acceptance will result in forfeiture of the entry fee. Completed entry forms with payment attached, payable to ROMPEX, must be received by the Exhibits Chairman by April 13, 2010. Should exhibit frames be sold out before that date, entry fees will be returned. A junior exhibitor's parent or guardian must also sign the junior's entry form. The Exhibits Committee reserves the right to reject any exhibit, in which case entry fees will be refunded.

**Synopsis/Title Pages** - Exhibitors **must send eight copies** of their synopsis (no more than 3 pages) and/or, the title page (and exhibit plan for thematic exhibits), with their completed entry form. **Any entry received without a synopsis and/or title page will not be accepted until that page is received.** These pages may be preliminary and labeled "*subject to change*".

**Delivery of Exhibits** - Send mail-in exhibits to Ronald Hill, Exhibits Chairman, P.O. Box 621383, Littleton, CO 80162-1383 to arrive no earlier than May 3, 2010 and no later than May 11, 2010. Exhibits may be personally delivered to the Crowne Plaza Hotel - Denver International Airport, 15500 E. 40<sup>th</sup> Avenue (I-70 and Chambers Road) between 3:00 p.m. and 6:00 p.m. on Thursday, May 13, 2010. Exhibitors who prefer to use other means should arrange with the Exhibits Chairman.

**Return of Exhibits** - No exhibit will be removed from the frames until the exhibit area has been cleared of all visitors after the exhibition closes at 3:00 p.m. on Sunday, May 16, 2010. Exhibits not being returned by mail must be picked up by 4:30 p.m. Exhibitors not planning to retrieve their exhibits personally or via agents on Sunday, May 16, 2010 must prepay the return postage of their exhibits. ROMPEX will mail these exhibits after the show closes and no later than May 19, 2009. Exhibits will be returned via USPS Express Mail or USPS insured Priority Mail. **Exhibits will not be returned via USPS Registered Mail.** United Parcel

"Be the change you want to see in the world."

Service is prohibited from carrying stamp exhibits and Federal Express prefers not to.

**3. JUDGING and AWARDS** - Competitive exhibits will be judged in one of the **four** exhibit classes (below) by a panel of five or more APS-accredited judges against the standards established for that class and division. Decisions of the judges will be final. Exhibits may be reclassified for the benefit of the exhibitors. The winner of the RMSS Grand Award will be eligible to participate in the APS Champion of Champions competition at Richmond, Virginia, in August 2010. Winner of the One-Frame Grand will be eligible to compete in the APS AmeriStamp Expo Champion of Champions competition at the Charleston Convention Center, Charleston, SC, February, 2011. The Most Popular exhibit award winner will also be able to compete in Charleston for the Most Popular competition.

**Competitive Exhibits** - For those exhibitors who wish to compete under the rules established by the APS for World Series of Philately exhibitions, exhibits will be from one of the following **four** classes; **General, Youth, One-Frame**, and **Picture Postcard**. Within the **General Class** there are **six divisions** as listed below. Exhibits in the General Class must be a minimum of two to a maximum of ten frames. There are no frame restrictions for the Youth or Picture Postcard Classes. Five medal levels will be awarded at the discretion of the judges: Gold, Vermeil, Silver, Silver-Bronze, and Bronze. The RMSS Grand and Reserve Grand will be selected from the General Class exhibits.

There will be a Youth Grand also selected from the entries from that Class. Specialty awards will be selected per the criteria for each as determined by the jury. Each exhibit will be judged using the UEEF form (except Youth) and each exhibitor will receive a copy.

**General Class Divisions:** 1) Postal, 2) Revenue, 3) Thematic, 4) Display, 5) Illustrated Mail, and 6) Cinderella.

**One Frame Class – NOTE: A Maximum of 12 One Frame Exhibits Will Be Accepted.** Five levels of awards will be available at the discretion of the judges: Gold, Vermeil, Silver, Silver-Bronze and Bronze. A One-Frame Grand Award will be selected by the jury.

**Court of Honor and Non-Competitive Class** - The Exhibits Committee will accept non-competitive exhibits by special arrangement only. Court of Honor exhibits will be selected in conjunction with the attending societies and the Show Committee. If you have questions, contact the Exhibits Chairman at the address below.

**4. SECURITY and LIABILITY** - Neither Rocky Mountain Philatelic Exhibitions, Inc. (ROMPEX), its member clubs, any society participating in the Rocky Mountain Stamp Show, the Crowne Plaza Hotel-Denver International Airport, nor any of their committees or employees shall be liable for any loss or damage arising from any cause whatsoever.

Every precaution, including armed guards, will be provided to safeguard all exhibits against loss or damage while being mounted, in the frames, and during takedown. **EXHIBITORS DESIRING INSURANCE MUST PROVIDE THEIR OWN COVERAGE.**

## **5. MISCELLANEOUS INFORMATION**

Please pay particular attention to how you enter your name, exhibit title, and the brief (about 25 word) description.

How you write it on the entry form is how it will appear in the show program and publicity releases. Eligibility for **Novice Awards** will depend entirely upon notification of their qualifications by the exhibitor on the Entry Form.

The Rocky Mountain Stamp Show 2010 bourse will consist of 40 or more dealers and a **USPS** philatelic booth.

Exhibition activities will include lectures and seminars, judges' critique, and the Saturday evening awards banquet.

Featured and attending societies include the Women Exhibitors (WE), ROSSICA, Bittersweet Exhibitors, St Louis Bears and Midnight Mavericks. All exhibitors receive free admission to Rocky Mountain Stamp Show 2010 for themselves and one guest, a copy of the exhibition program, one set of cacheted exhibition covers, a copy of the palmares, and a certificate of participation.

An advance events registration package will be forwarded early in 2010 to all exhibitors planning to attend Rocky Mountain Stamp Show 2010. This package contains a Crowne Plaza Hotel reservation form, and price and ordering information for the Rocky Mountain Stamp Show Awards Banquet and extra exhibition cachets. Similar information can also be found on the internet at: [www.rockymountainstampshow.com](http://www.rockymountainstampshow.com)

## **6. QUESTIONS and INFORMATION**

If you have any questions, contact Ronald Hill, RMSS 2010 Exhibits Chairman, P.O. Box 621383, Littleton CO 80162-1383. Phone: (303-241-5409) or via e-mail at [rompex2010@comcast.net](mailto:rompex2010@comcast.net)

*"The unselfish effort to bring cheer to others will be the beginning of a happier life for ourselves."*

HELEN KELLER

PAGE 6

# Rocky Mountain Stamp Show 2010 (ROMPEX 2010) - Official Entry Form

May 14-16, 2010 – Denver, Colorado

EXHIBITOR INFORMATION			
Name		Phone (    )	
Address			
City	State	Country	ZIP/Postal Code
E-mail Address		I plan to attend ROMPEX 2010 <input type="checkbox"/> Yes <input type="checkbox"/> No	
I belong to these stamp organizations: <input type="checkbox"/> APS <input type="checkbox"/> ATA <input type="checkbox"/> AAPE <input type="checkbox"/> Women Exhibitors <input type="checkbox"/> Rossica <input type="checkbox"/> Others (list below)			
Junior Exhibitor <input type="checkbox"/> Yes <input type="checkbox"/> No		Birthday (if Junior)	Novice Exhibitor <input type="checkbox"/> Yes <input type="checkbox"/> No
I desire anonymity <input type="checkbox"/> Yes <input type="checkbox"/> No		"Nom de plume?"	
EXHIBIT INFORMATION			
Title			
Description (for show program)			
CLASS (See Prospectus): <input type="checkbox"/> General <input type="checkbox"/> Youth <input type="checkbox"/> One Frame <input type="checkbox"/> Pictorial Postcard GENERAL CLASS Divisions <input type="checkbox"/> Postal <input type="checkbox"/> Revenue <input type="checkbox"/> Thematic <input type="checkbox"/> Display <input type="checkbox"/> Illustrated Mail <input type="checkbox"/> Cinderella			Number of Frames
DELIVERY/RETURN INFORMATION			
Delivery: <input type="checkbox"/> I will deliver my exhibit personally between 3:00 pm and 8:00 pm on Thursday, May 13, 2010. <input type="checkbox"/> My exhibit will be delivered by _____ between 3:00 pm and 8:00 pm on May 13, 2010. <input type="checkbox"/> I will mail/ship my exhibit via _____ to arrive between May 3 <sup>rd</sup> and May 11 <sup>th</sup> , 2010.			
Return: <input type="checkbox"/> I will pick up my exhibit personally between 3:00 pm and 4:30 pm on Sunday, May 16, 2010. <input type="checkbox"/> My exhibit will be picked up by _____ between 3:00 pm and 4:30 pm on May 16, 2010. <input type="checkbox"/> Please return my exhibit via <input type="checkbox"/> Express Mail insured for _____ <input type="checkbox"/> Priority Mail insured for _____			
FEE INFORMATION		SIGNATURES	
Entry Fees: \$10.00 x _____ frames (for three to ten frames)		I agree to the rules and regulations for exhibiting at <b>Rocky Mountain Stamp Show 2010</b>	
\$25.00 (One-or Two-Frame exhibits)		Signature	
Free (Junior exhibits only)		Signature of Parent/Guardian (for Junior exhibitors)	
Return Postage and Insurance Fees (Mail-back only)			
Total Enclosed			

COMPLETED ENTRY FORM AND PAYMENT MUST BE RECEIVED BY THE EXHIBITS CHAIRMAN BY APRIL, 13, 2010.

Make checks payable to ROMPEX 2010 and mail to:

**Ronald Hill, RMSS Exhibits Chairman, P.O. Box 621383, Littleton, CO 80162-1383**

Additional contact: 303-241-5409 or rompex2010@comcast.net

"We need mentors who are extremely dependable and consistent."

CRYSTAL DAVIS

PAGE 7